



EN Operating instructions. page 1
Original

General information



Observe country-specific regulations for installation, safety, accident prevention and also rules governing proper disposal.

Technical data

Standards:	IEC 60947-5-1, BG-GS-ET-15
Design according to ISO 14119:	1
Protection class:	IP65, IP67 to IEC 60529
Protection class 235, 255 or 236, 256:	I or II,
Degree of pollution:	3
Ambient temperature:	-30 °C ... +80 °C
Tightening force:	
- Fixing screws 236, 256:	1.2 Nm
- Fixing screws 235, 255:	2 Nm
- Cover screw 235, 255:	0.7 Nm
- Screws of the actuating head:	0.45 Nm
Cable section:	0.75 ... 2.5 mm ²
Utilisation category AC-15, DC-13 I _e /U _e :	
- Screw terminals:	4 A / 240 VAC, 1 A / 24 VDC
- M12 connector, 4-pole 236, 256:	4 A / 240 VAC, 1 A / 24 VDC
- M12 connector, 4-pole 235, 255:	4 A / 50 VAC, 1 A / 24 VDC
Rated impulse withstand voltage U _{imp} :	
- Screw terminals:	6 kV
- M12 connector, 4-pole 236, 256 or 235, 255:	4 kV or 0.8 kV
Rated insulation voltage U _i :	
- Screw terminals:	250 V
- M12 connector, 4-pole 236, 256 or 235, 255:	250 V or 50 V
Thermal test current I _{the} :	
- Screw terminals:	10 A
- M12 connector, 4-pole:	4 A
Max. fuse rating:	6 A gG D-fuse
Required short-circuit current:	1,000 A
B _{10D} NC contact to ISO 13849-1:	20,000,000



For NPT threads, conduit hub is to be connected to conduit before hub is connected to enclosure.
For 256 Models: Not for use with rigid conduit.



Further information along with the latest applicable declaration of conformity can be found in the Schmersal catalogues or in the online catalogue on the Internet: www.schmersal.net.

K.A. Schmersal GmbH & Co. KG
Mödinghofe 30, D - 42279 Wuppertal
Postfach 24 02 63, D - 42232 Wuppertal

Phone: +49 - (0)2 02 - 64 74 - 0
Telefax: +49 - (0)2 02 - 64 74 - 1 00
E-Mail: info@schmersal.com
Internet: <http://www.schmersal.com>

Contact variants

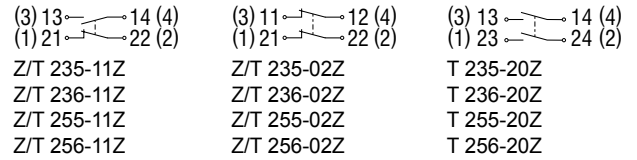


The electrical connection may only be carried out by authorised personnel in a de-energised condition.

For the cable entry, suitable cable glands with an appropriate degree of protection must be used.

Pin assignment of versions with M12 connector shown in brackets.

All NC contacts have positive break

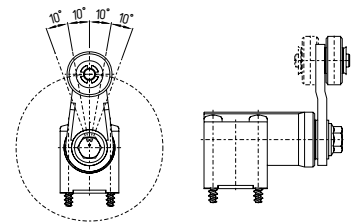
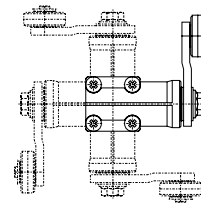


Mounting

The enclosure must not be used as an end stop.
Any mounting position. (Dimensions in mm)

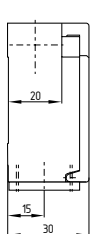
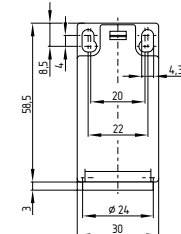
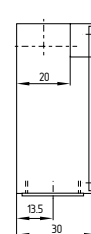
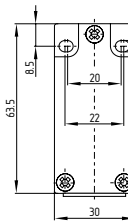
Actuation head adjustable in increments of 90°

Offset roller lever adjustable in increments of 10°



Z/T 235

Z/T 236



Z/T 255

Z/T 256

